

Techtrol Vertical Level Control for Boiler/Pressure Vessels - VLC

It is a versatile magnetic float operated device, top mounted in external chambers of steam boilers / pressure vessels and most suited for reliable automatic on-off control of boiler feed pumps, burner cut-outs or lock-outs, high or low level alarms or their combinations.

Salient Features :

- Bistable switch action.
- Adjustable multiple switch mechanisms.
- Process temperature upto 250°C.
- Working steam pressure upto 25Kg/cm².
- IBR Approved for Steam Boiler.

Construction :

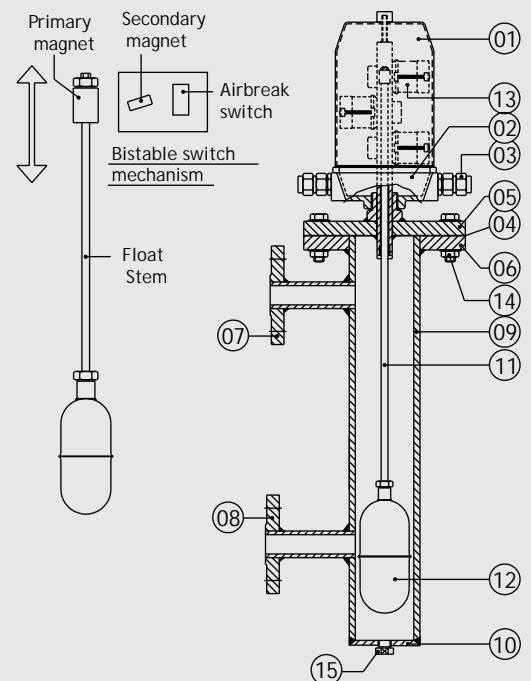
The float mounted in the external chamber, moves upward or downward, depending on rising or falling of liquid in the boiler/ vessel. This initiates the float stem, carrying a primary magnet at its upper end, to slide up or down, inside a non-magnetic central tube and cause the secondary magnet to actuate air-break contacts for onward operation of auxiliary devices. A maximum of 3 switch mechanisms can be provided, which are housed in a weatherproof enclosure and clamped onto central tube, to provide a control range of 150mm.

Specifications :

Switch Enclosure	:	Cast Al, WP IP-55
Cable Gland	:	3/4" ET or 1/2" NPT Brass
Switch Mechanism	:	Adjustable, Airbreakswitch x 5A, 230VAC (SPDT)
Switch Action	:	Bistable
No.of Switch Mechanisms	:	Max three (Adjustable)
Control Range	:	150 mm (Approx)
Operating Differential	:	25±5mm
Terminals	:	To suit 2.5mm ² conductor
Float & Stem	:	SS304 or SS316
Float Size	:	Ø65 x 165 mm
Chamber MOC	:	CS
Process Connections	:	25 NB, T 'H' or ANSI 150#, 300# flange
C-C Distances	:	200 or 300 or 400 or 500 mm
Drain	:	1/2"Plug
Max Temperature	:	250°C (std) and 300°C with radiating fins
Test Pressure	:	upto 50Kg/cm ²
Min Liquid Density	:	0.8 g/cm ³

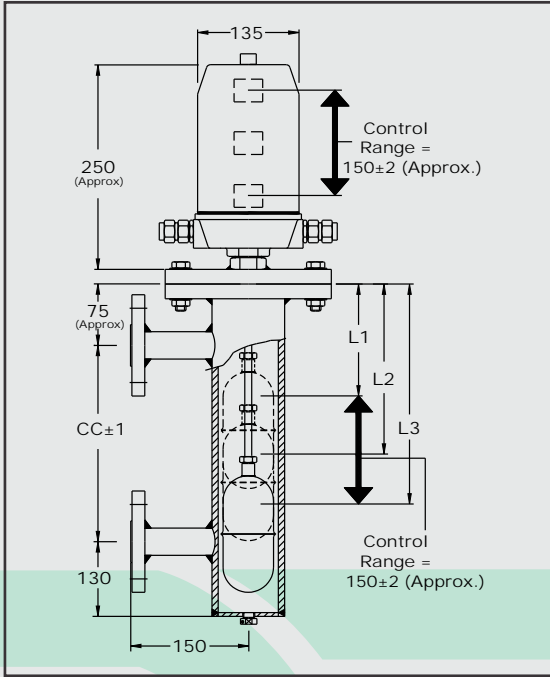


Fig. 1

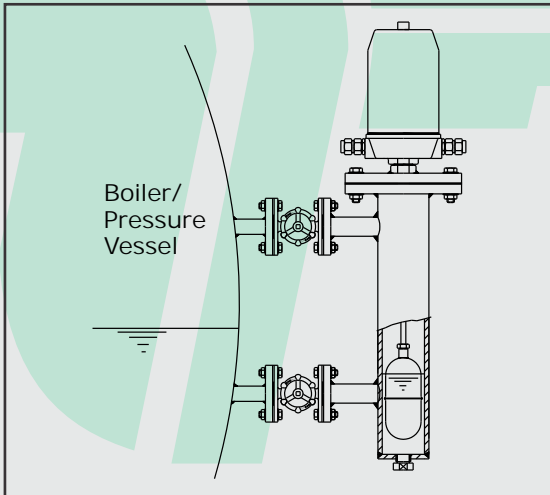


- | | |
|----------------------|--------------------------|
| 01) Switch enclosure | 08) Water side conn |
| 02) Base | 09) Chamber |
| 03) Conduit conn | 10) Chamber end cap |
| 04) Gasket | 11) Float stem |
| 05) Switch flange | 12) Float |
| 06) Chamber flange | 13) Airbreak switch assy |
| 07) Steam side conn | 14) Bolts & nuts |
| | 15) Plug |

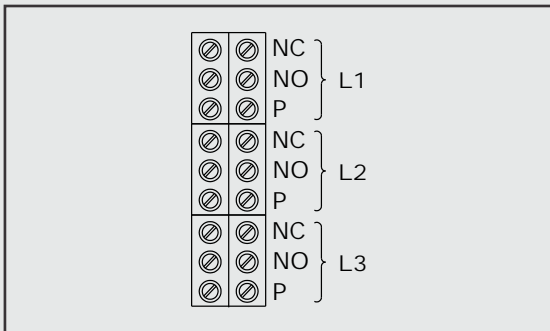
Schematic Diagram :



Installation :



Termination :



Ordering Information :

Please specify Model No., Operating Temp., Pressure & Set Point Positions (L1, L2 & L3)

Model Identification :

VLC -		
Approval		
None	_____	W
IBR	_____	B
Process Flange		
25NB, BS-10 T` H'	_____	1
25NB, ANSI 150 #	_____	2
25NB, ANSI 300 #	_____	3
Others	_____	O
No of Switches		
One	_____	1
Two	_____	2
Three	_____	3
Chamber		
Without	_____	W
CS	_____	B
Others	_____	O
CC Distance		
200	_____	2
300	_____	3
400	_____	4
500	_____	5
Others	_____	O
Float & Stem		
SS304	_____	N
SS316	_____	S
Others	_____	O
High Temp Arrangement		
Not provided	_____	W
Provided	_____	H
Drain		
1/2" BSP Plug	_____	1
Others	_____	O

All dimensions in mm except specified